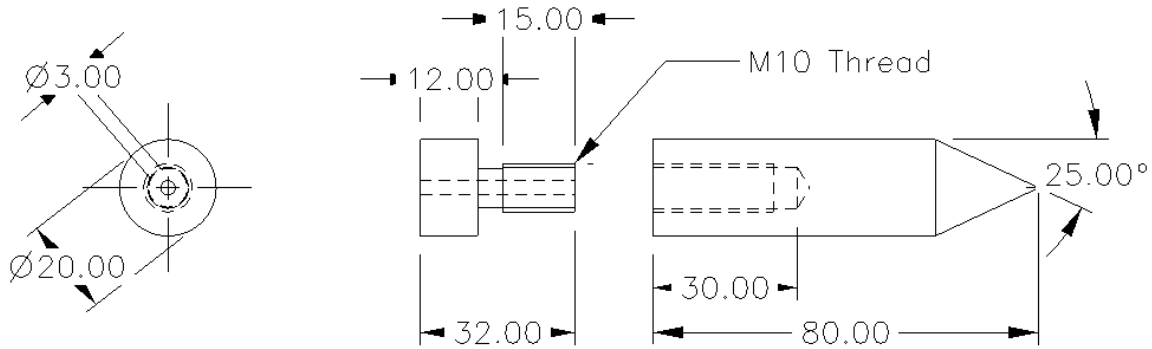


Metal Turning Exercise



Requirements:

- Using 32mm round aluminium from the available stock, produce the small plumb to the dimensions shown in the drawing above.
- The plumb should be machined using a manual centre lathe.

Enhancements:

- Consider knurling the screw section
- Can it be modified to store/secure the string?
- Consider aluminium finishing techniques
- Document the aspects and issues raised during the turning process
- Create reference information for drilling and tapping